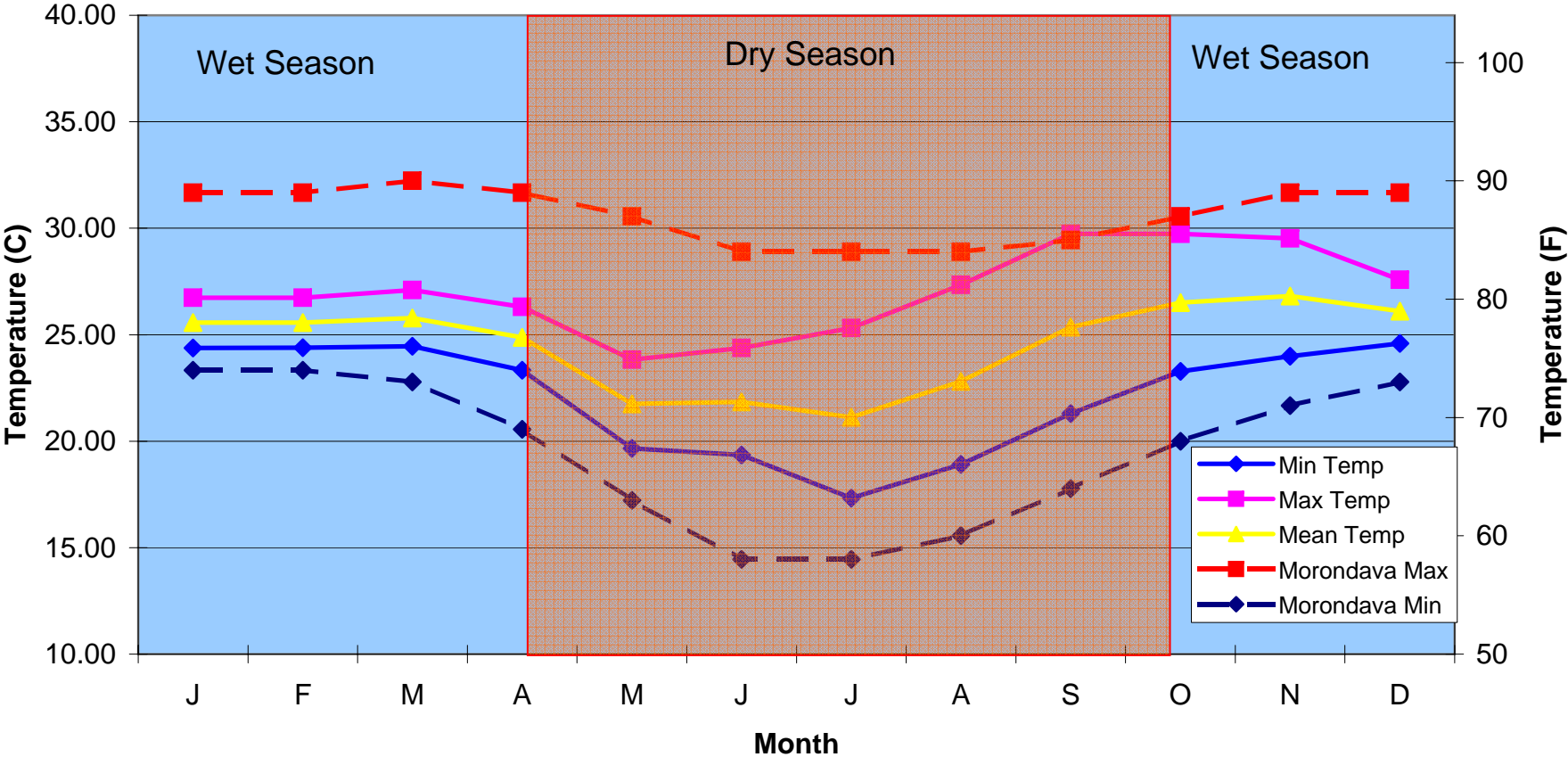


### Monthly Soil Temperature Averages



Solid lines are monthly averages of daily temperatures provided by Durrell Wildlife Conservation Trust from a data logger buried 3cm deep in Kirindy Forest, Madagascar, to approximate nest conditions of *Pyxis planicauda*.  
 Data collected from 7 July 2005 to 6 April 2007.  
 Dashed lines represent monthly average air temperatures from the airport at Morondava, Madagascar.